

## 2 Gang Single Receptacle or Switch Cover, 1.750" Round

### Features

- Self-closing cover
- Inclusive of gasket and screws
- Suitable for wet location when the cover is closed

### Applications

- For one 1.750" Diameter
- Use to Provide protection for outdoor 2 gang weatherproof box

### We Supply

- Suffix 'C' for Carded

### Standard Material

- Cover: Aluminum die-cast
- Gasket: Polyethylene foam

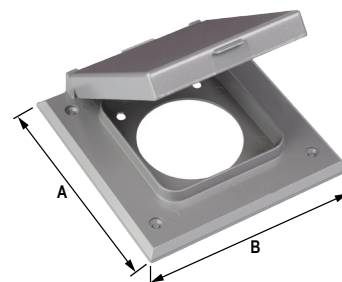
### Standard Finish

- Powder coated
- Gray, black, bronze, white

### Certification

- UL 514D
- NEMA 3R Rated

Catalog ID	A	B	Color
W2C212	4.55	4.55	
W2C212BL	4.55	4.55	
W2C212AB	4.55	4.55	
W2C212WH	4.55	4.55	



## 2 Gang Single Receptacle or Switch Cover, 2.125" Round

### Features

- Self-closing cover
- Inclusive of gasket and screws
- Suitable for wet location when the cover is closed

### Applications

- For one 2.125" Diameter
- Use to Provide protection for outdoor 2 gang weatherproof box

### We Supply

- Suffix 'C' for Carded

### Standard Material

- Cover: Aluminum die-cast
- Gasket: Polyethylene foam

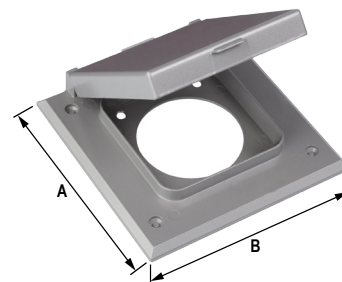
### Standard Finish

- Powder coated
- Gray, black, bronze, white

### Certification

- UL 514D
- NEMA 3R Rated

Catalog ID	A	B	Color
W2C213	4.55	4.55	
W2C213BL	4.55	4.55	
W2C213AB	4.55	4.55	
W2C213WH	4.55	4.55	



## 2 Gang Single Receptacle or Switch Cover, 2.640" Round

### Features

- Self-closing cover
- Inclusive of gasket and screws
- Suitable for wet location when the cover is closed

### Applications

- For one 2.640" Diameter
- Use to Provide protection for outdoor 2 gang weatherproof box

### We Supply

- Suffix 'C' for Carded

### Standard Material

- Cover: Aluminum die-cast
- Gasket: Polyethylene foam

### Standard Finish

- Powder coated
- Gray, black, bronze, white

### Certification

- UL 514D
- NEMA 3R Rated

Catalog ID	A	B	Color
W2C214	4.55	4.55	
W2C214BL	4.55	4.55	
W2C214AB	4.55	4.55	
W2C214WH	4.55	4.55	

