

## 1 Gang Single Receptacle or Switch Cover, 1.650" Round

### Features

- Self-closing cover
- Inclusive of gasket and screws
- Suitable for wet location when the cover is closed

### Applications

- For one 1.650" Diameter
- Use to Provide protection for outdoor 1 gang weatherproof box
- For vertical installation

### We Supply

- Suffix 'C' for Carded

### Standard Material

- Cover: Aluminum die-cast
- Gasket: Polyethylene foam

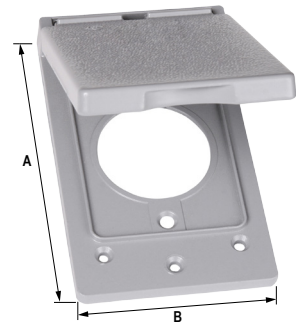
### Standard Finish

- Powder coated
- Gray, black, bronze, white

### Certification

- UL 514D
- NEMA 3R Rated

Catalog ID	A	B	Color
W1C115V	4.57	2.83	
W1C115VBL	4.57	2.83	
W1C115VAB	4.57	2.83	
W1C115VWH	4.57	2.83	



## 1 Gang Single Receptacle or Switch Cover, 1.750" Round

### Features

- Self-closing cover
- Inclusive of gasket and screws
- Suitable for wet location when the cover is closed

### Applications

- For one 1.750" Diameter
- Use to Provide protection for outdoor 1 gang weatherproof box
- For vertical installation

### We Supply

- Suffix 'C' for Carded

### Standard Material

- Cover: Aluminum die-cast
- Gasket: Polyethylene foam

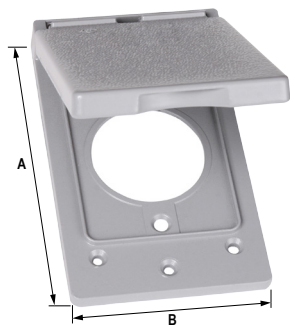
### Standard Finish

- Powder coated
- Gray, black, bronze, white

### Certification

- UL 514D
- NEMA 3R Rated

Catalog ID	A	B	Color
W1C116V	4.57	2.83	
W1C116VBL	4.57	2.83	
W1C116VAB	4.57	2.83	
W1C116VWH	4.57	2.83	



## 1 Gang Single Receptacle or Switch Cover, 2.125" Round

### Features

- Self-closing cover
- Inclusive of gasket and screws
- Suitable for wet location when the cover is closed

### Applications

- For one 2.125" Diameter
- Use to Provide protection for outdoor 1 gang weatherproof box
- For vertical installation

### We Supply

- Suffix 'C' for Carded

### Standard Material

- Cover: Aluminum die-cast
- Gasket: Polyethylene foam

### Standard Finish

- Powder coated
- Gray, black, bronze, white

### Certification

- UL 514D
- NEMA 3R Rated

Catalog ID	A	B	Color
W1C117V	4.57	2.83	
W1C117VBL	4.57	2.83	
W1C117VAB	4.57	2.83	
W1C117VWH	4.57	2.83	

