

1 Gang Single Receptacle or Switch Cover, 1.425" Round

Features

- Self-closing cover
- Inclusive of gasket and screws
- Suitable for wet location when the cover is closed

Applications

- For one 1.425" Diameter
- Use to Provide protection for outdoor 1 gang weatherproof box
- For vertical installation

We Supply

- Suffix 'C' for Carded

Standard Material

- Cover: Aluminum die-cast
- Gasket: Polyethylene foam

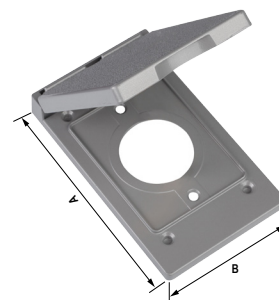
Standard Finish

- Powder coated
- Gray, black, bronze, white

Certification

- UL 514D
- NEMA 3R Rated

Catalog ID	A	B	Color
W1C112V	4.57	2.83	
W1C112VBL	4.57	2.83	
W1C112VAB	4.57	2.83	
W1C112VWH	4.57	2.83	



1 Gang Single Receptacle or Switch Cover, 1.450" Round

Features

- Self-closing cover
- Inclusive of gasket and screws
- Suitable for wet location when the cover is closed

Applications

- For one 1.450" Diameter
- Use to Provide protection for outdoor 1 gang weatherproof box
- For vertical installation

We Supply

- Suffix 'C' for Carded

Standard Material

- Cover: Aluminum die-cast
- Gasket: Polyethylene foam

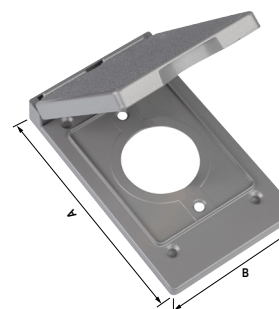
Standard Finish

- Powder coated
- Gray, black, bronze, white

Certification

- UL 514D
- NEMA 3R Rated

Catalog ID	A	B	Color
W1C113V	4.57	2.83	
W1C113VBL	4.57	2.83	
W1C113VAB	4.57	2.83	
W1C113VWH	4.57	2.83	



1 Gang Single Receptacle or Switch Cover, 1.625" Round

Features

- Self-closing cover
- Inclusive of gasket and screws
- Suitable for wet location when the cover is closed

Applications

- For one 1.625" Diameter
- Use to Provide protection for outdoor 1 gang weatherproof box
- For vertical installation

We Supply

- Suffix 'C' for Carded

Standard Material

- Cover: Aluminum die-cast
- Gasket: Polyethylene foam

Standard Finish

- Powder coated
- Gray, black, bronze, white

Certification

- UL 514D
- NEMA 3R Rated

Catalog ID	A	B	Color
W1C114V	4.57	2.83	
W1C114VBL	4.57	2.83	
W1C114VAB	4.57	2.83	
W1C114VWH	4.57	2.83	

