

Aluminum, Panelboard Lug, Six Conductor
Dual Rated (AL9CU)

Features

- Manufactured from high strength aluminum alloy
- Chamfered entry
- Electro-Tin plated for corrosion resistance
- UL486A/B Listed for Wire Connectors
- CSA certified to standard 22.2
- Suitable for use with either copper or aluminum conductors
- Provides low contact resistance
- Saves time and provides ease of installation
- Stacked design

Standard Material

- Aluminum

Standard Finish

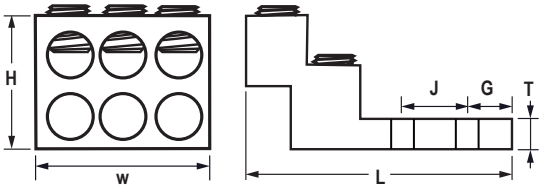
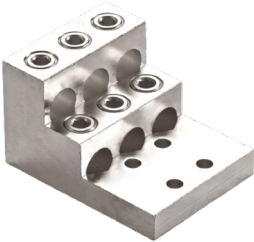
- Electro-tin plated

Electrical Rating

- Voltage Rating: 600 V
- Maximum Circuit Rating: 35 kV
- Temperature Rating: 90°C

We Supply

- Suffix "-1/4", "-5/16", "-3/8", "-1/2", "-5/8", for special mounting stud holes.



For Aluminum and Copper Conductors

Catalog ID	Fig. No.	Conductor Range	Bolt Size	Dimensions In Inches						Wrench Style		Torque in (lbs)
				L	W	H	T	J	G			
99065	1	750-1/0	3/8	4.94	4.00	3.00	0.75	1.38	0.37	Allen Hex		500

All wire sizes, unless noted otherwise, are American Wire Gauge (AWG)
We suggest using an oxide inhibitor for every aluminum termination.