

F

E

D

C

B

A

F

E

D

C

B

A

Catalog Id		Conductor			Stud Size	Dimensions									Color Code	Installation Tooling				Dieless	
Without Inspection Window (Fig-1)	With Inspection Window (Fig-2)	AWG	Flex Conductor G,H,I,K,M & DLO	Expanded Cod. Range		OD	L	B	A	W	T	ØF	E	C		Burndy Model - Y35, Y39, Y750, PAT750, PAT750LI	IlSCO ILC-12-N, ILC-12-H-N, ILCB-12		Huskie Model - EP-510C Die Index		Greeniee HK1240
BA98107	PBA98107	400	300 (G,H,I,K,M)	400 - #4/0	1/2	0.94 [24.10]	5.47 [139.00]	1.97 [50.00]	2.99 [76.00]	1.39 [35.20]	0.17 [4.50]	0.51 [13.00]	0.61 [15.70]	1.75 [44.50]	Blue	U32RT U30ART	ILD-16	ILD - 67	HT41BK	KC12-400	Burndy Dieless - PAT444S & PAT4PC834LI. IlSCO Dieless -IDT-6, IDT-6H, IDTB-6, IDTB-6-LIO, TB-6DF1000-P,IDT-12-N, IVTB-6. Greenlee & NSI Dieless - HK12ID, EK12IDL, N12ID.
BA98107A	PBA98107A		313.3(DLO)		3/8	0.94 [24.10]	4.29 [109.00]	1.97 [50.00]	1.81 [46.00]	1.39 [35.20]	0.17 [4.50]	0.41 [10.50]	0.38 [9.70]	1.00 [25.40]							

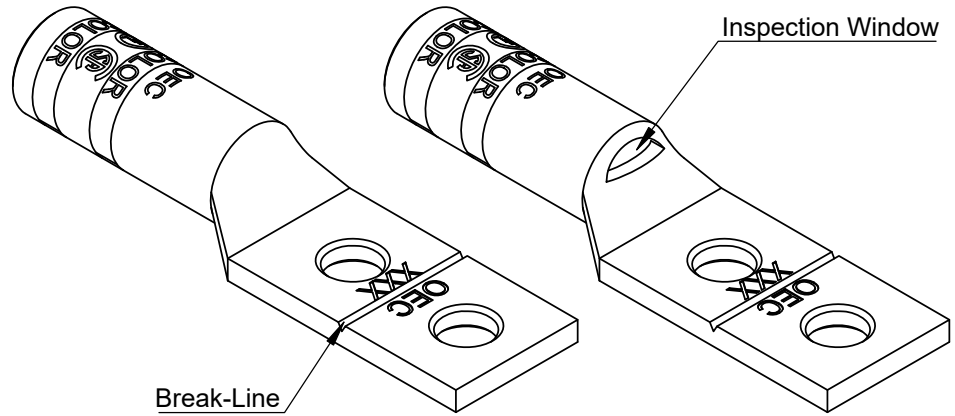
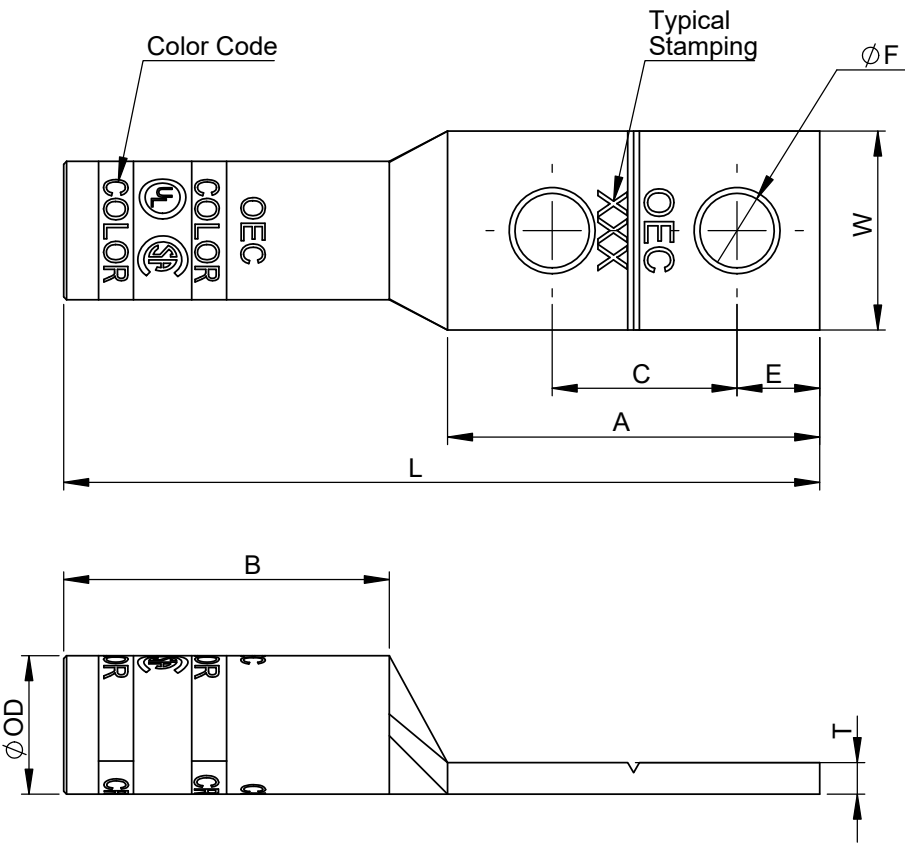


Fig-1

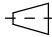

Fig-2

- Note:
- Manufactured from high strength seamless Copper tubing
 - Color coded die index and crimp marks
 - Electro-Tin plated for corrosion resistance
 - Pre-filled with oxide inhibitor and capped with color coded cap.
 - UL486A/B Listed for Wire Connectors
 - UL Listed and CSA Certified with competitor's compression tools
 - Listed for use with class B & C, flex class G, H, I, K, M & DLO cable

Crimping Instructions

- Select the proper lug or splice connector for the size of cable being installed, ensuring that the size matches the description in the table.
- Strip the insulation from the cable to a length so that the stripped area of the cable can be completely inserted into and fill the barrel of the lug or splice. Carefully strip the insulation from the cable without nicking the strands.
- Clean the stripped portion of the cable to remove oxide films.
- The stripped portion of the cable must be clean and inserted completely into the connector barrel.
- Using the tool and die combination specified for that connector in the table above, install crimps, leaving a space of 1/8 inch minimum between successive crimps.
For Short Barrel Connectors, apply 1 crimp,
For Long Barrel Connectors, apply 2 crimps on the color coded bands

THE INFORMATION CONTAINED WITHIN THIS DOCUMENT IS PROPRIETARY TO OEC AND MAY NOT BE DISCLOSED WITHOUT PRIOR WRITTEN CONSENT

			TOLERANCE						
			OD	L	B	A	W	ØF	
			±0.20	±1.0	±0.50	±0.50	±1.0	±0.20	
<div>TOLERANCES-UNLESS OTHERWISE SPECIFIED</div> <div>2 PL. DEC. ±.015 TRUE C.L. ±.015</div> <div>3 PL. DEC. ±.015 ANGLES ±.015</div>				NAME	DATE	<div><div>OEC</div> Usa Inc.</div> <div>106 Northfield Avenue, Edison, NJ 08837, Phone: +1 732-479-0469 www.oec-americas.com</div>			
			DRAWN	R.P.	08.03.25				
			CHECK	S.P.	08.03.25				
			APPROVED	M.K.	08.03.25				
<div>DWG. NO.</div> <div>OC-0015</div> <div>MATERIAL Refer Note</div>			PROJECTION: FIRST ANGLE			<div>TITLE: Copper Two Hole Long Barrel Compression Lug Break-Away</div>			
			<div><div></div><div></div></div>						SIZE A3
FINISH Refer Note			Cat Id. BA98107 - BA98107A			REV			
			DO NOT SCALE DRAWING			SHEET 14 OF 19			