

F

E

D

C

B

A

F

E

D

C

B

A

Catalog Id		Conductor			Stud Size	Dimensions									Color Code	Installation Tooling				Dieless	
Without Inspection Window (Fig-1)	With Inspection Window (Fig-2)	AWG	Flex Conductor G,H,I,K,M & DLO	Expanded Cod. Range		OD	L	B	A	W	T	ØF	E	C		Burndy Model - Y35, Y39, Y750, PAT750, PAT750LI	IlSCO ILC-12-N, ILC-12-H-N, ILCB-12		Huskie Model - EP-510C Die Index		Greenlee HK1240
BA98085	PBA98085	#6	#7	#6 - #8	1/4	0.29 [7.50]	2.36 [60.00]	0.98 [25.00]	1.26 [32.00]	0.42 [10.70]	0.08 [2.10]	0.25 [6.40]	0.28 [7.10]	0.62 [15.90]	Blue	U5CRT U8CABT	ILD - 3	ILD - 24	HT41AT / HT41GL	KC12-6	Burndy Dieless - PAT444S & PAT4PC834LI.  IlSCO Dieless - IDT-6, IDT-6H, IDTB-6, IDTB-6-LIO, TB-6DF1000-P, IDT-12-N, IVTB-6.  Greenlee & NSI Dieless - HK12ID, EK12IDL, N12ID.
BA98085A	PBA98085A				1/4	0.29 [7.50]	2.24 [57.00]	0.98 [25.00]	1.14 [29.00]	0.42 [10.70]	0.08 [2.10]	0.25 [6.40]	0.28 [7.10]	0.50 [12.70]							
BA98085B	PBA98085B				1/2	0.29 [7.50]	4.09 [104.00]	0.98 [25.00]	2.99 [76.00]	0.83 [21.00]	0.08 [2.10]	0.51 [13.00]	0.62 [15.70]	1.75 [44.50]							
BA98085C	PBA98085C				1/4	0.29 [7.50]	2.48 [63.00]	0.98 [25.00]	1.37 [35.00]	0.42 [10.70]	0.08 [2.10]	0.25 [6.40]	0.28 [7.10]	0.75 [19.10]							
BA98085D	PBA98085D				3/8	0.29 [7.50]	2.91 [74.00]	0.98 [25.00]	1.81 [46.00]	0.55 [14.00]	0.06 [1.60]	0.41 [10.50]	0.38 [9.70]	1.00 [25.40]							
BA98085E	PBA98085E				3/8	0.29 [7.50]	2.72 [69.00]	0.98 [25.00]	1.61 [41.00]	0.55 [14.00]	0.06 [1.60]	0.41 [10.50]	0.32 [8.10]	0.75 [19.10]							

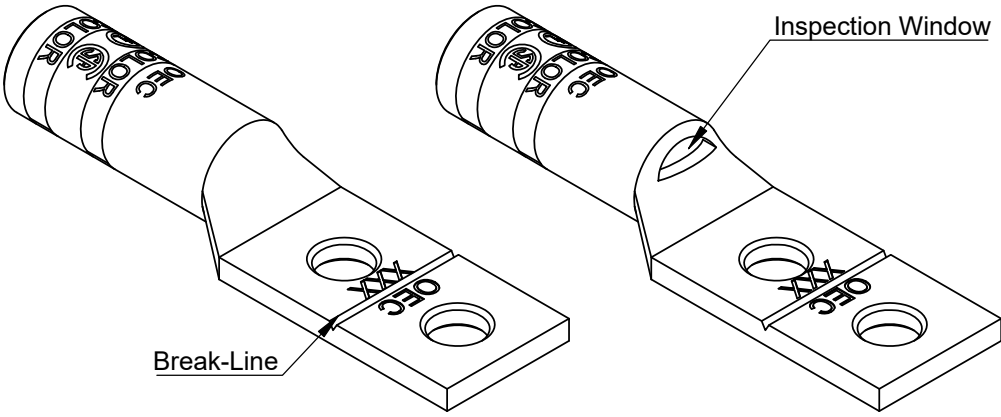
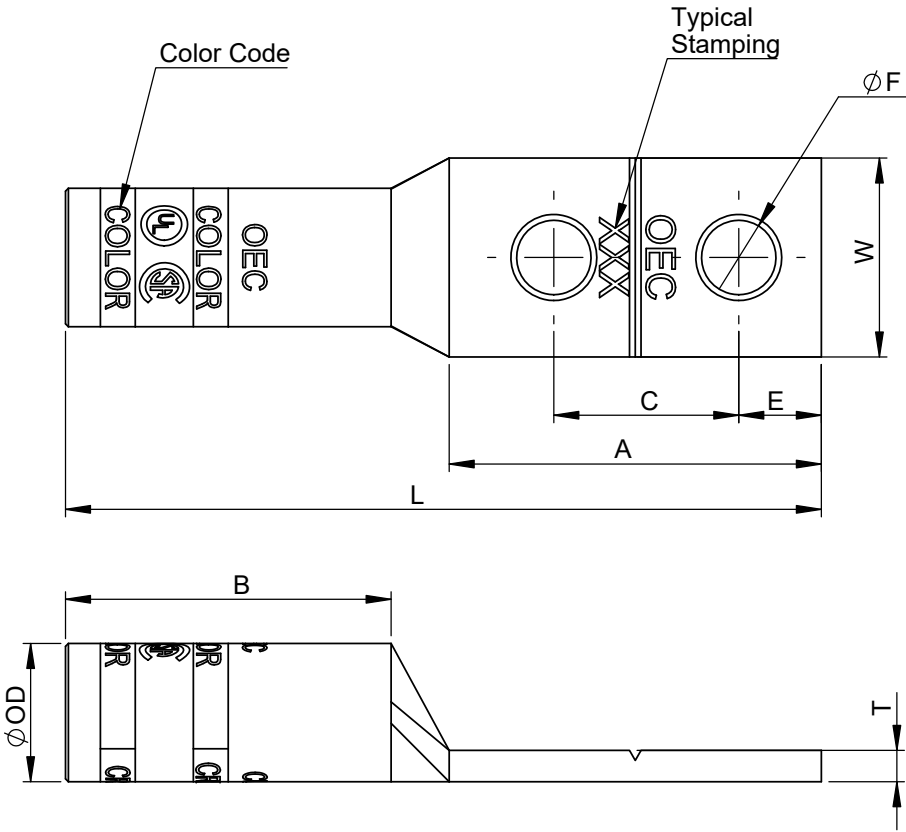


Fig-1


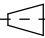

Fig-2

- Note:
- Manufactured from high strength seamless Copper tubing
  - Color coded die index and crimp marks
  - Electro-Tin plated for corrosion resistance
  - Pre-filled with oxide inhibitor and capped with color coded cap.
  - UL486A/B Listed for Wire Connectors
  - UL Listed and CSA Certified with competitor's compression tools
  - Listed for use with class B & C, flex class G, H, I, K, M & DLO cable

Crimping Instructions

- Select the proper lug or splice connector for the size of cable being installed, ensuring that the size matches the description in the table.
- Strip the insulation from the cable to a length so that the stripped area of the cable can be completely inserted into and fill the barrel of the lug or splice. Carefully strip the insulation from the cable without nicking the strands.
- Clean the stripped portion of the cable to remove oxide films.
- The stripped portion of the cable must be clean and inserted completely into the connector barrel.
- Using the tool and die combination specified for that connector in the table above, install crimps, leaving a space of 1/8 inch minimum between successive crimps.  
For Short Barrel Connectors, apply 1 crimp,  
For Long Barrel Connectors, apply 2 crimps on the color coded bands

THE INFORMATION CONTAINED WITHIN THIS DOCUMENT IS PROPRIETARY TO OEC AND MAY NOT BE DISCLOSED WITHOUT PRIOR WRITTEN CONSENT

TOLERANCE					
OD	L	B	A	W	ØF
±0.20	±1.0	±0.50	±0.50	±1.0	±0.20
TOLERANCES-UNLESS OTHERWISE SPECIFIED 2 PL. DEC. ±.015    TRUE C.L. ±.015 3 PL. DEC. ±.015    ANGLES ±.015		NAME	DATE	<div> <b>Usa Inc.</b> 106 Northfield Avenue, Edison, NJ 08837, Phone: +1 732-479-0469    www.oec-americas.com</div>	
DRAWN	R.P.	08.03.25			
CHECK	S.P.	08.03.25			
APPROVED	M.K.	08.03.25			
DWG. NO. OC-0015	PROJECTION:  FIRST ANGLE 		SIZE A3	TITLE: Copper Two Hole Long Barrel Compression Lug Break-Away	
MATERIAL    Refer Note					
FINISH        Refer Note					
Cat Id.    BA98085 - BA98085E				REV	
DO NOT SCALE DRAWING				SHEET 2 OF 19	