

F

E

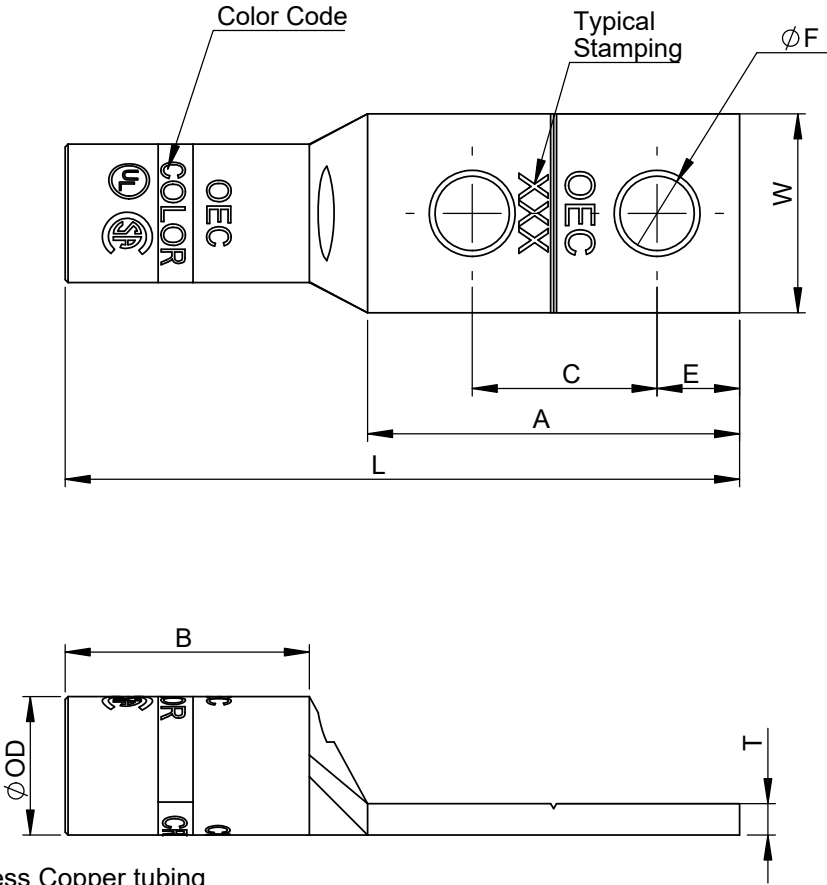
D

C

B

A

Catalog Id		Conductor			Stud Size	Dimensions									Color Code	Installation Tooling				Dieless	
Without Flared Barrel (Fig-1)	With Flared Barrel (Fig-2)	AWG	Flex Conductor G,H,I,K,M & DLO	Expanded Cod. Range		OD	L	B	A	W	T	ØF	E	C		Burndy Model - Y35, Y39, Y750, PAT750, PAT750LI	Ilscos ILC-12-N, ILC-12-H-N, ILCB-12		Huskie Model - EP-510C Die Index		Greenlee HK1240
BA98049A	FBA98049A	#1/0	#1	#1/0 - #6	1/4	0.52 [13.20]	2.40 [61.00]	0.83 [21.00]	1.38 [35.00]	0.74 [18.90]	0.13 [3.20]	0.25 [6.40]	0.28 [7.10]	0.75 [19.10]	Pink	U25RT U2CART	ILD-8	ILD - 42	HT41AY	KC12-1/0	Burndy Dieless - PAT444S & PAT4PC834LI.  Ilscos Dieless -IDT-6, IDT-6H, IDTB-6, IDTB-6-LIO, TB-6DF1000-P,IDT-12-N, IVTB-6.  Greenlee & NSI Dieless - HK12ID, EK12IDL, N12ID.
BA98050	FBA98050				3/8	0.52 [13.20]	2.83 [72.00]	0.83 [21.00]	1.81 [46.00]	0.74 [18.90]	0.13 [3.20]	0.41 [10.50]	0.38 [9.70]	1.00 [25.40]							
BA98050A	FBA98050A				1/2	0.52 [13.20]	4.01 [102.00]	0.83 [21.00]	2.99 [76.00]	0.74 [18.90]	0.13 [3.20]	0.51 [13.00]	0.62 [15.70]	1.75 [44.50]							



- Note:
- Manufactured from high strength seamless Copper tubing
  - Color coded die index and crimp marks
  - Electro-Tin plated for corrosion resistance
  - Pre-filled with oxide inhibitor and capped with color coded cap.
  - UL486A/B Listed for Wire Connectors
  - UL Listed and CSA Certified with competitor's compression tools
  - Listed for use with class B & C, flex class G, H, I, K, M & DLO cable

Crimping Instructions

- Select the proper lug or splice connector for the size of cable being installed, ensuring that the size matches the description in the table.
- Strip the insulation from the cable to a length so that the stripped area of the cable can be completely inserted into and fill the barrel of the lug or splice. Carefully strip the insulation from the cable without nicking the strands.
- Clean the stripped portion of the cable to remove oxide films.
- The stripped portion of the cable must be clean and inserted completely into the connector barrel.
- Using the tool and die combination specified for that connector in the table above, install crimps, leaving a space of 1/8 inch minimum between successive crimps.  
For Short Barrel Connectors, apply 1 crimp,  
For Long Barrel Connectors, apply 2 crimps on the color coded bands

THE INFORMATION CONTAINED WITHIN THIS DOCUMENT IS PROPRIETARY TO OEC AND MAY NOT BE DISCLOSED WITHOUT PRIOR WRITTEN CONSENT

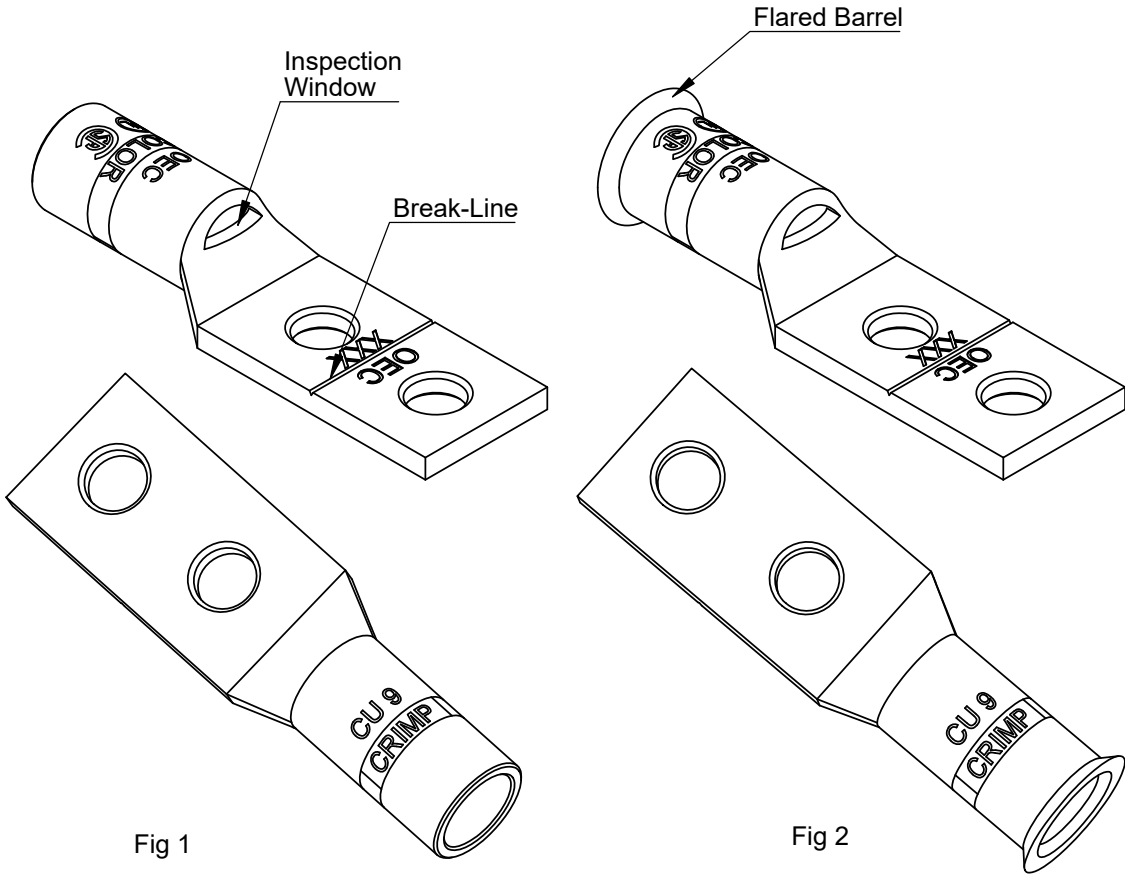

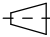



Fig 1

Fig 2

TOLERANCE						
OD	L	B	A	W	ØF	
±0.20	±1.0	±0.50	±0.50	±1.0	±0.20	
TOLERANCES-UNLESS OTHERWISE SPECIFIED		NAME	DATE	<div> 106 Northfield Avenue, Edison, NJ 08837, Phone: +1 732-479-0469 www.oec-americas.com</div>		
2 PL. DEC. ±.015	TRUE C.L. ±.015	DRAWN	R.P.			01.03.25
3 PL. DEC. ±.015	ANGLES ±.015	CHECK	S.P.			01.03.25
		APPROVED	M.K.			01.03.25
DWG. NO. OC-0007	PROJECTION: 		FIRST ANGLE 	SIZE A3	TITLE: Copper Two Hole Standard Barrel Compression Lug Break-Away	
MATERIAL Refer Note						
FINISH Refer Note						
Cat Id. BA98049A - BA98050A					REV	
DO NOT SCALE DRAWING					SHEET 7 OF 19	