

F

E

D

C

B

A

F

E

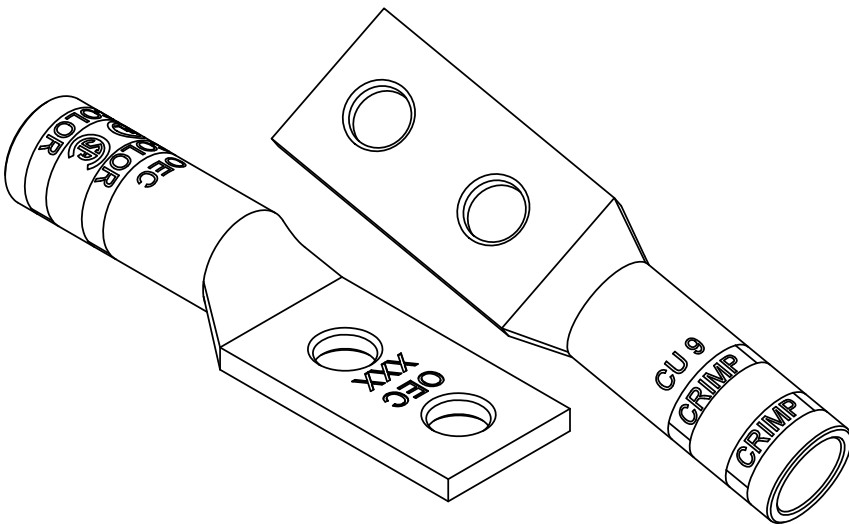
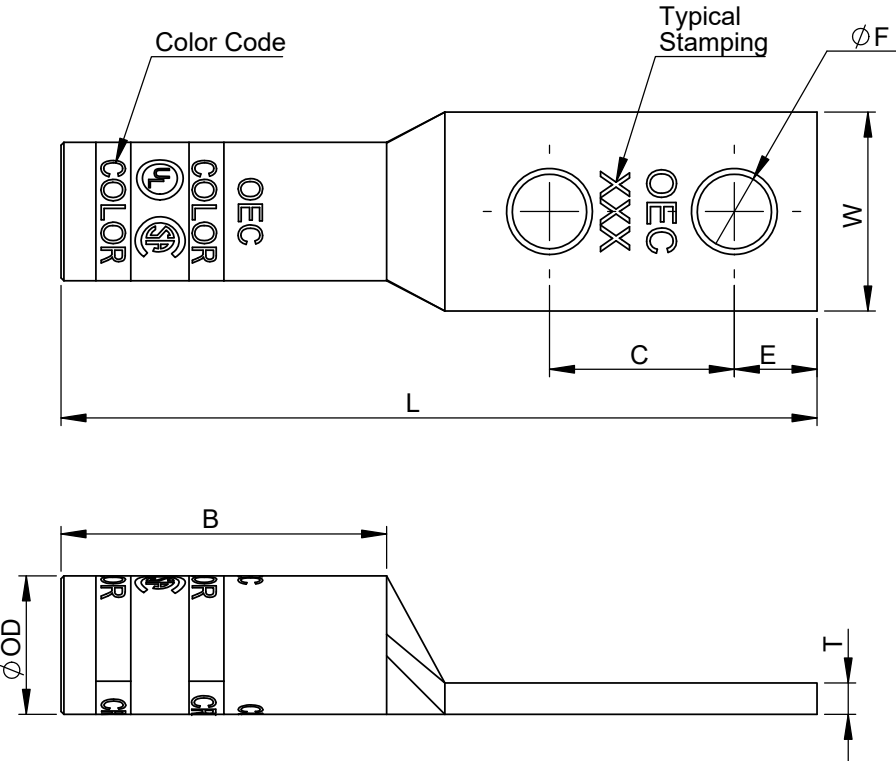
D

C

B

A

Catalog Id	Conductor			Stud Size	Dimensions								Color Code	Installation Tooling			Dieless
	AWG	Flex Conductor G,H,I,K,M & DLO	Expanded Cod. Range		OD	L	B	W	T	ØF	E	C		Burndy Model - Y35, Y39, Y750, PAT750, PAT750LI	Burndy Model - Y35, Y39, Y750, PAT750, PAT750LI With IlSCO	Greenlee HK1240 & EK1240LI	
98548	#3/0	#2/0	#3/0 - #2	1/2	0.76 [19.30]	5.00 [127.00]	1.40 [35.60]	1.03 [26.10]	0.29 [7.40]	0.56 [14.22]	0.63 [16.00]	1.75 [44.45]	Ruby	U27ART	ILD-467	KA12-3/0	Burndy Dieless - PAT444S & PAT444.  Greenlee Dieless - HK12ID & EK12IDL
98548A				3/8	0.76 [19.30]	4.20 [106.70]	1.40 [35.60]	1.03 [26.10]	0.29 [7.40]	0.41 [10.50]	0.38 [9.70]	1.00 [25.40]					
98548B				3/8	0.76 [19.30]	4.95 [125.80]	1.40 [35.60]	1.03 [26.10]	0.29 [7.40]	0.41 [10.50]	0.38 [9.70]	1.75 [44.45]					
98548C				1/2	0.76 [19.30]	4.63 [117.50]	1.40 [35.60]	1.03 [26.10]	0.29 [7.40]	0.56 [14.22]	0.63 [16.00]	1.37 [34.90]					




- Note:
- Manufactured from high strength seamless Aluminum tubing
  - Color coded die index and crimp marks
  - Electro-Tin plated for corrosion resistance
  - Pre-filled with oxide inhibitor and capped with color coded cap.
  - UL486A/B Listed for Wire Connectors
  - UL Listed and CSA Certified with competitor's compression tools
  - Listed for use with class B & C, flex class G, H, I, K, M & DLO cable

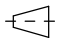
Crimping Instructions

- Select the proper lug or splice connector for the size of cable being installed, ensuring that the size matches the description in the table.
- Strip the insulation from the cable to a length so that the stripped area of the cable can be completely inserted into and fill the barrel of the lug or splice. Carefully strip the insulation from the cable without nicking the strands.
- Clean the stripped portion of the cable to remove oxide films.
- The stripped portion of the cable must be clean and inserted completely into the connector barrel.
- Using the tool and die combination specified for that connector in the table above, install crimps, leaving a space of 1/8 inch minimum between successive crimps.  
For Short Barrel Connectors, apply 1 crimp,  
For Long Barrel Connectors, apply 2 crimps on the color coded bands

THE INFORMATION CONTAINED WITHIN THIS DOCUMENT IS PROPRIETARY TO OEC AND MAY NOT BE DISCLOSED WITHOUT PRIOR WRITTEN CONSENT

			TOLERANCE				
			OD	L	B	W	Ø F
			±0.20	±1.0	±0.50	±1.0	±0.20

TOLERANCES-UNLESS OTHERWISE SPECIFIED  2 PL. DEC. ±.015    TRUE C.L. ±.015 3 PL. DEC. ±.015    ANGLES ±.015		NAME	DATE	<div> <b>Usa Inc.</b></div> <div>106 Northfield Avenue, Edison, NJ 08837, Phone: +1 732-479-0469   www.oec-americas.com</div>
	DRAWN	R.P.	20.02.25	
	CHECK	S.P.	20.02.25	
	APPROVED	M.K.	20.02.25	

DWG. NO. <b>OC-0022</b>	<div>PROJECTION: <b>FIRST ANGLE</b></div> <div></div> <div>SIZE A3</div>	TITLE: Aluminum Two Hole Long Barrel Compression Lug
MATERIAL   Refer Note		
FINISH   Refer Note		

Cat Id. 98548 - 98548C	REV
DO NOT SCALE DRAWING	SHEET 8 OF 20