

F

E

D

C

B

A

F

E

D

C

B

A

Catalog Id		Conductor			Stud Size	Dimensions									Color Code	Installation Tooling					Dieless
Without Inspection Window (Fig-1)	With Inspection Window (Fig-2)	AWG	Flex Conductor G,H,I,K,M & DLO	Expanded Cod. Range		OD	L	B	A	W	T	ØF	E	C		Burndy Model - Y35, Y39, Y750, PAT750, PAT750LI	IlSCO ILC-12-N, ILC-12-H-N, ILCB-12		Huskie Model - EP-510C Die Index	Greeniee HK1240	
98110	P98110	750	600 (G,H,I,M)	750 - 500	1/2	1.31 [33.30]	6.30 [160.00]	2.64 [67.00]	2.99 [76.00]	1.90 [48.30]	0.27 [6.80]	0.51 [13.00]	0.62 [15.70]	1.75 [44.50]	Black	U39RT	ILD - 18	ILD - 106	HT41BP	KC12-750	Burndy Dieless - PAT444S & PAT4PC834LI. IlSCO Dieless -IDT-6, IDT-6H, IDTB-6, IDTB-6-LIO, TB-6DF1000-P,IDT-12-N, IVTB-6. Greenlee & NSI Dieless - HK12ID, EK12IDL, N12ID.
98110A	P98110A		646(DLO)		3/8	1.31 [33.30]	5.12 [130.00]	2.64 [67.00]	1.81 [46.00]	1.90 [48.30]	0.27 [6.80]	4.13 [10.50]	0.38 [9.70]	1.00 [25.40]							

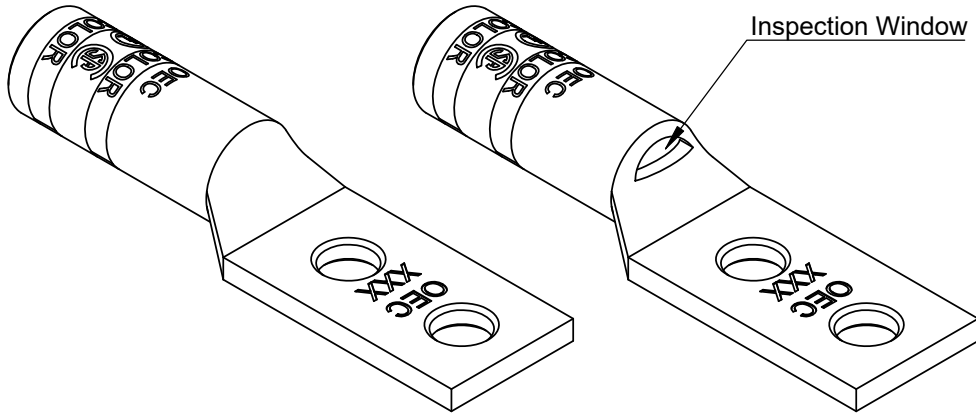
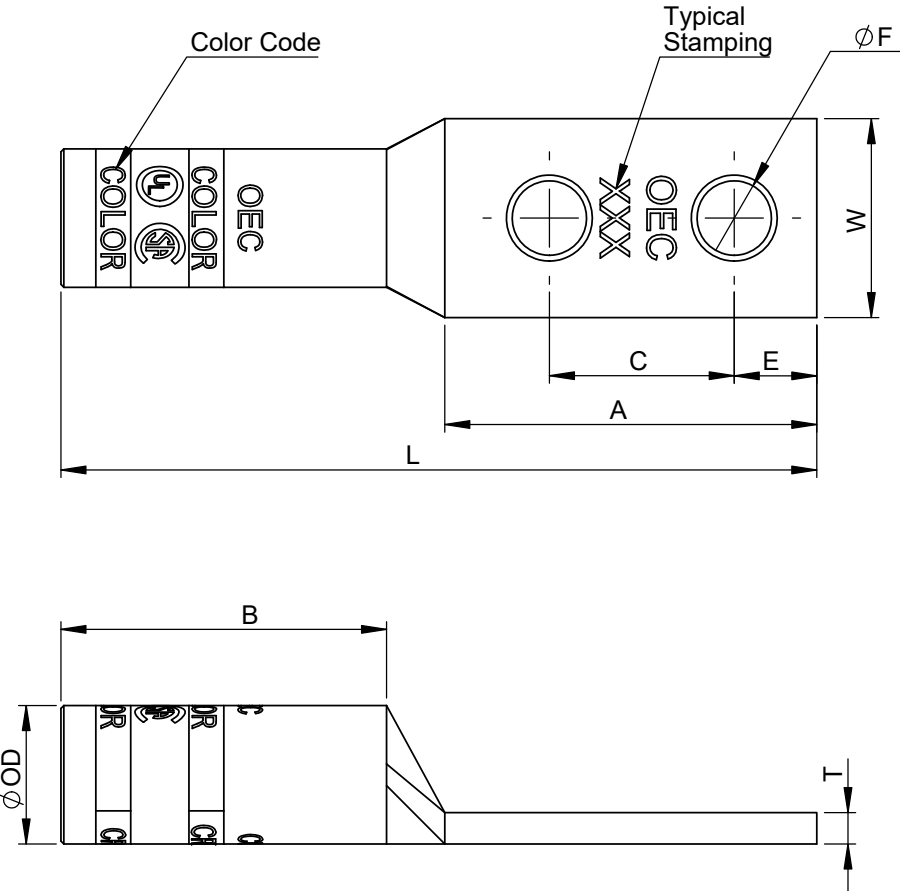


Fig-1


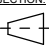
Fig-2

- Note:
- Manufactured from high strength seamless Copper tubing
 - Color coded die index and crimp marks
 - Electro-Tin plated for corrosion resistance
 - Pre-filled with oxide inhibitor and capped with color coded cap.
 - UL486A/B Listed for Wire Connectors
 - UL Listed and CSA Certified with competitor's compression tools
 - Listed for use with class B & C, flex class G, H, I, K, M & DLO cable

Crimping Instructions

- Select the proper lug or splice connector for the size of cable being installed, ensuring that the size matches the description in the table.
- Strip the insulation from the cable to a length so that the stripped area of the cable can be completely inserted into and fill the barrel of the lug or splice. Carefully strip the insulation from the cable without nicking the strands.
- Clean the stripped portion of the cable to remove oxide films.
- The stripped portion of the cable must be clean and inserted completely into the connector barrel.
- Using the tool and die combination specified for that connector in the table above, install crimps, leaving a space of 1/8 inch minimum between successive crimps.
For Short Barrel Connectors, apply 1 crimp,
For Long Barrel Connectors, apply 2 crimps on the color coded bands

THE INFORMATION CONTAINED WITHIN THIS DOCUMENT IS PROPRIETARY TO OEC AND MAY NOT BE DISCLOSED WITHOUT PRIOR WRITTEN CONSENT

		TOLERANCE					
		OD	L	B	A	W	Ø F
		±0.20	±1.0	±0.50	±0.50	±1.0	±0.20
TOLERANCES-UNLESS OTHERWISE SPECIFIED 2 PL. DEC. ±.015 TRUE C.L. ±.015 3 PL. DEC. ±.015 ANGLES ±.015			NAME	DATE	<div> Usa Inc.</div> <div>106 Northfield Avenue, Edison, NJ 08837, Phone: +1 732-479-0469 www.oec-americas.com</div>		
		DRAWN	R.P.	20.02.25			
		CHECK	S.P.	20.02.25			
		APPROVED	M.K.	20.02.25			
DWG. NO. OC-0012		PROJECTION:	FIRST ANGLE	SIZE A3	TITLE: Copper Two Hole Long Barrel Compression Lug		
MATERIAL Refer Note							
FINISH Refer Note							
					Cat Id. 98110 - 98110A		REV
					DO NOT SCALE DRAWING		SHEET 18 OF 19