

F

E

D

C

B

A

F

E

D

C

B

A

Catalog Id		Conductor			Stud Size	Dimensions									Color Code	Installation Tooling				Dieless	
Without Inspection Window (Fig-1)	With Inspection Window (Fig-2)	AWG	Flex Conductor G,H,I,K,M & DLO	Expanded Cod. Range		OD	L	B	A	W	T	ØF	E	C		Burdny Model - Y35, Y39, Y750, PAT750, PAT750LI	Ilsco ILC-12-N, ILC-12-H-N, ILCB-12		Huskie Model - EP-510C Die Index		Greeniee HK1240
98107	P98107	400	300 (G,H,I,K,M)	400 - #4/0	1/2	0.94 [24.10]	5.47 [139.00]	1.97 [50.00]	2.99 [76.00]	1.39 [35.20]	0.17 [4.50]	0.51 [13.00]	0.61 [15.70]	1.75 [44.50]	Blue	U32RT U30ART	ILD-16	ILD - 67	HT41BK	KC12-400	Burdny Dieless - PAT444S & PAT4PC834LI.
98107A	P98107A		313.3(DLO)		3/8	0.94 [24.10]	4.29 [109.00]	1.97 [50.00]	1.81 [46.00]	1.39 [35.20]	0.17 [4.50]	0.41 [10.50]	0.38 [9.70]	1.00 [25.40]							Ilsco Dieless -IDT-6, IDT-6H, IDTB-6, IDTB-6-LIO, TB-6DF1000-P,IDT-12-N, IVTB-6.

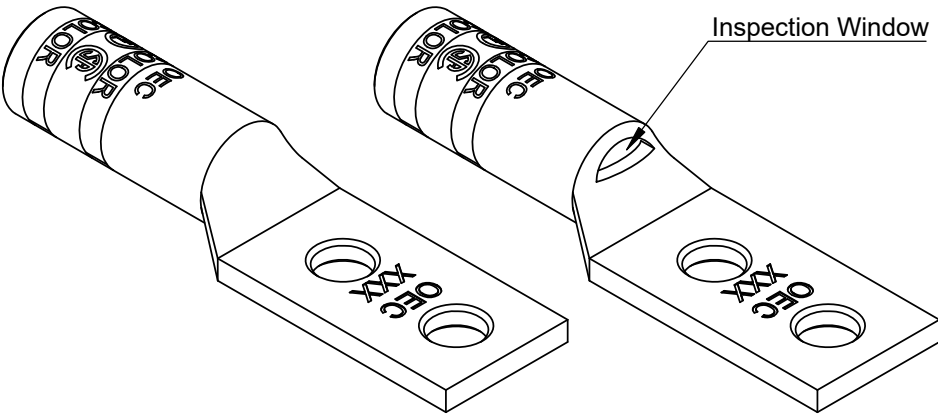
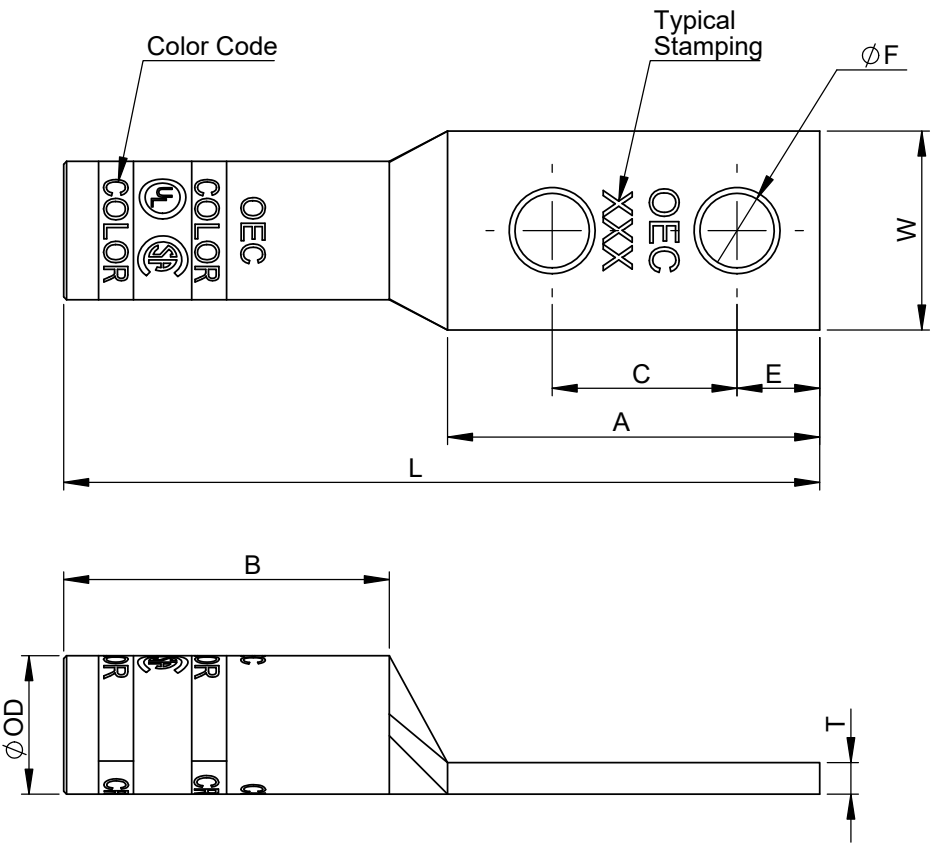


Fig-1


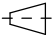

Fig-2

- Note:
- Manufactured from high strength seamless Copper tubing
  - Color coded die index and crimp marks
  - Electro-Tin plated for corrosion resistance
  - Pre-filled with oxide inhibitor and capped with color coded cap.
  - UL486A/B Listed for Wire Connectors
  - UL Listed and CSA Certified with competitor's compression tools
  - Listed for use with class B & C, flex class G, H, I, K, M & DLO cable

**Crimping Instructions**

- Select the proper lug or splice connector for the size of cable being installed, ensuring that the size matches the description in the table.
- Strip the insulation from the cable to a length so that the stripped area of the cable can be completely inserted into and fill the barrel of the lug or splice. Carefully strip the insulation from the cable without nicking the strands.
- Clean the stripped portion of the cable to remove oxide films.
- The stripped portion of the cable must be clean and inserted completely into the connector barrel.
- Using the tool and die combination specified for that connector in the table above, install crimps, leaving a space of 1/8 inch minimum between successive crimps.  
For Short Barrel Connectors, apply 1 crimp,  
For Long Barrel Connectors, apply 2 crimps on the color coded bands

THE INFORMATION CONTAINED WITHIN THIS DOCUMENT IS PROPRIETARY TO OEC AND MAY NOT BE DISCLOSED WITHOUT PRIOR WRITTEN CONSENT

TOLERANCE					
OD	L	B	A	W	ØF
±0.20	±1.0	±0.50	±0.50	±1.0	±0.20
TOLERANCES-UNLESS OTHERWISE SPECIFIED		NAME	DATE	<div> 106 Northfield Avenue, Edison, NJ 08837, Phone: +1 732-479-0469 www.oec-americas.com</div>	
2 PL. DEC. ±.015    TRUE C.L. ±.015	DRAWN	R.P.	20.02.25		
3 PL. DEC. ±.015    ANGLES ±.015	CHECK	S.P.	20.02.25		
	APPROVED	M.K.	20.02.25		
DWG. NO. OC-0012	PROJECTION: FIRST ANGLE		  SIZE A3	TITLE: Copper Two Hole Long Barrel Compression Lug	
MATERIAL Refer Note					
FINISH Refer Note			Cat Id. 98107 - 98107A		
			DO NOT SCALE DRAWING		SHEET 14 OF 19