

F

F

Catalog Id		Conductor			Stud Size	Dimensions								Color Code	Installation Tooling				Dieless	
Without Flared Barrel (Fig-1)	With Flared Barrel (Fig-2)	AWG	Flex Conductor G,H,I,K,M & DLO	Expanded Cod. Range		OD	L	B	A	W	T	ØF	E		Burndy Model - Y35, Y39, Y750, PAT750, PAT750LI	IlSCO ILC-12-N, ILC-12-H-N, ILCB-12		Huskie Model - EP-510C Die Index		Greenlee HK1240
98042	F98042	600	400 (G,H,I,K,M)	600 - 250	5/8	1.18 [30.20]	3.50 [89.00]	1.50 [38.00]	1.45 [37.00]	1.72 [43.60]	0.25 [6.40]	0.67 [17.00]	0.68 [17.50]	Green	U36RT U32ART	ILD-17	ILD - 94	HT41HH / HT41BM	KC12-600	Burndy Dieless - PAT444S & PAT4PC834LI.
98042A	F98042A		444(DLO)		1/2	1.18 [30.20]	3.50 [89.00]	1.50 [38.00]	1.45 [37.00]	1.72 [43.60]	0.25 [6.40]	0.51 [13.00]	0.52 [13.20]							IlSCO Dieless -IDT-6, IDT-6H, IDTB-6, IDTB-6-LIO, TB-6DF1000-P,IDT-12-N, IVTB-6.
Greenlee & NSI Dieless - HK12ID, EK12IDL, N12ID.																				

E

E

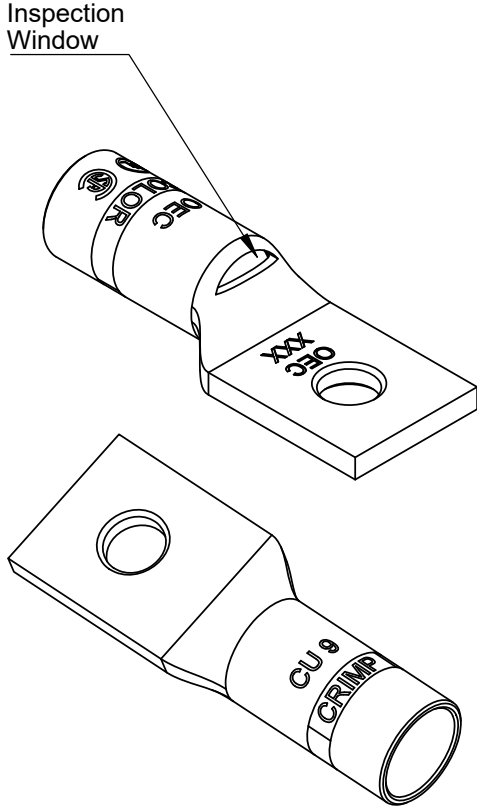
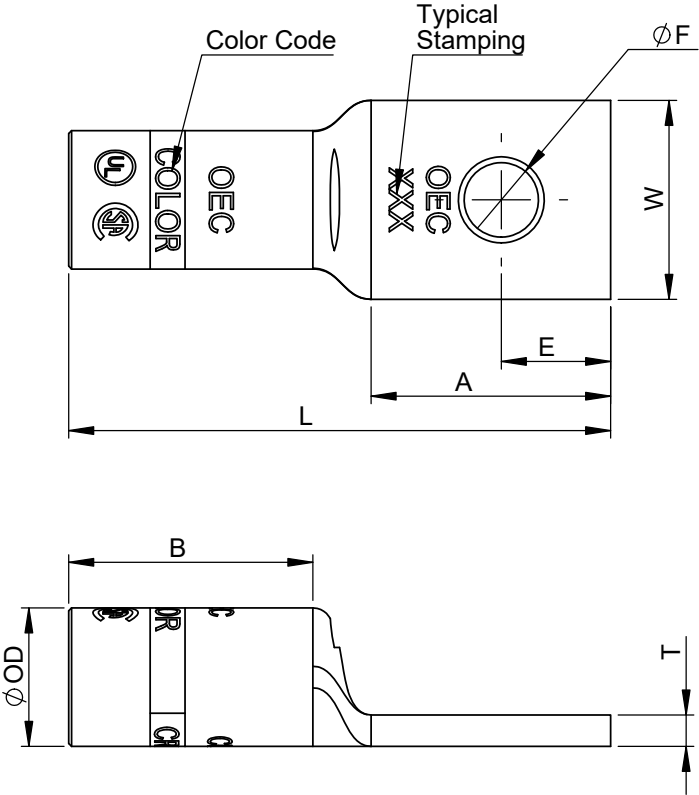


Fig-1

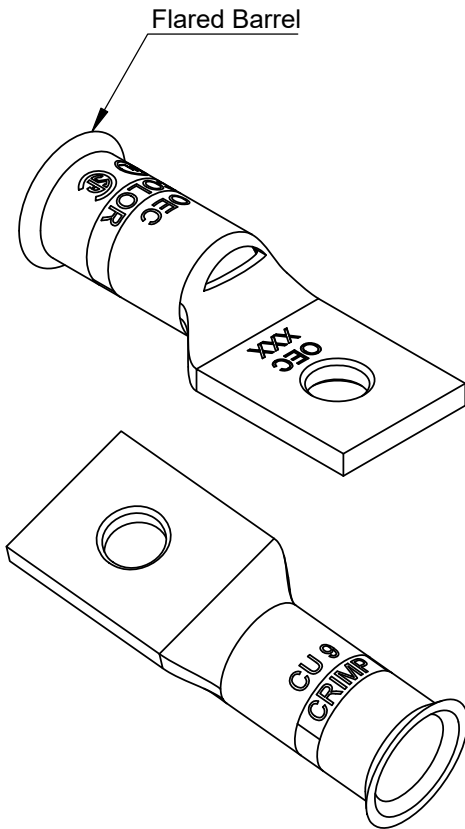



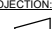
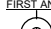
Fig-2

- Note:
- Manufactured from high strength seamless Copper tubing
 - Color coded die index and crimp marks
 - Electro-Tin plated for corrosion resistance
 - Pre-filled with oxide inhibitor and capped with color coded cap.
 - UL486A/B Listed for Wire Connectors
 - UL Listed and CSA Certified with competitor's compression tools
 - Listed for use with class B & C, flex class G, H, I, K, M & DLO cable

Crimping Instructions

- Select the proper lug or splice connector for the size of cable being installed, ensuring that the size matches the description in the table.
- Strip the insulation from the cable to a length so that the stripped area of the cable can be completely inserted into and fill the barrel of the lug or splice. Carefully strip the insulation from the cable without nicking the strands.
- Clean the stripped portion of the cable to remove oxide films.
- The stripped portion of the cable must be clean and inserted completely into the connector barrel.
- Using the tool and die combination specified for that connector in the table above, install crimps, leaving a space of 1/8 inch minimum between successive crimps.
For Short Barrel Connectors, apply 1 crimp,
For Long Barrel Connectors, apply 2 crimps on the color coded bands

TOLERANCE					
OD	L	B	A	W	ØF
±0.20	±1.0	±0.50	±0.50	±1.0	±0.20

TOLERANCES-UNLESS OTHERWISE SPECIFIED 2 PL. DEC. ±.015 TRUE C.L. ±.015 3 PL. DEC. ±.015 ANGLES ±.015		NAME	DATE	 106 Northfield Avenue, Edison, NJ 08837, Phone: +1 732-479-0469 www.oec-americas.com	
	DRAWN	R.P.	14.02.25		
	CHECK	S.P.	14.02.25		
	APPROVED	M.K.	14.02.25		
DWG. NO. OC-0001		PROJECTION:	FIRST ANGLE	SIZE A3	TITLE: Copper One Hole Standard Barrel Compression Lug
					
MATERIAL Refer Note		Cat Id. 98042-98042A			REV
FINISH Refer Note					
		DO NOT SCALE DRAWING			SHEET 16 OF 19

A