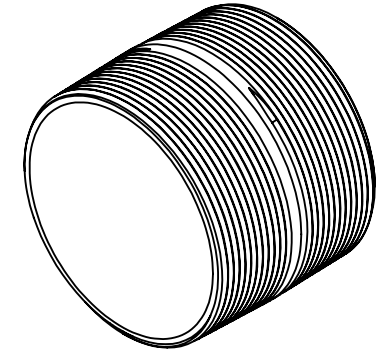
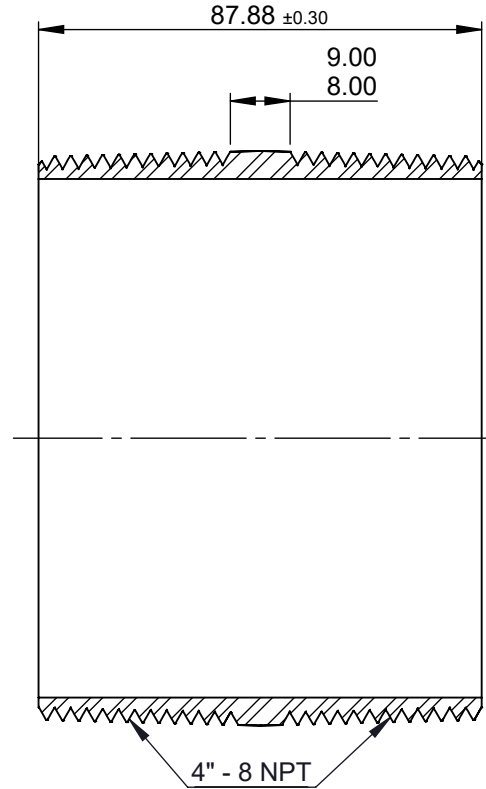
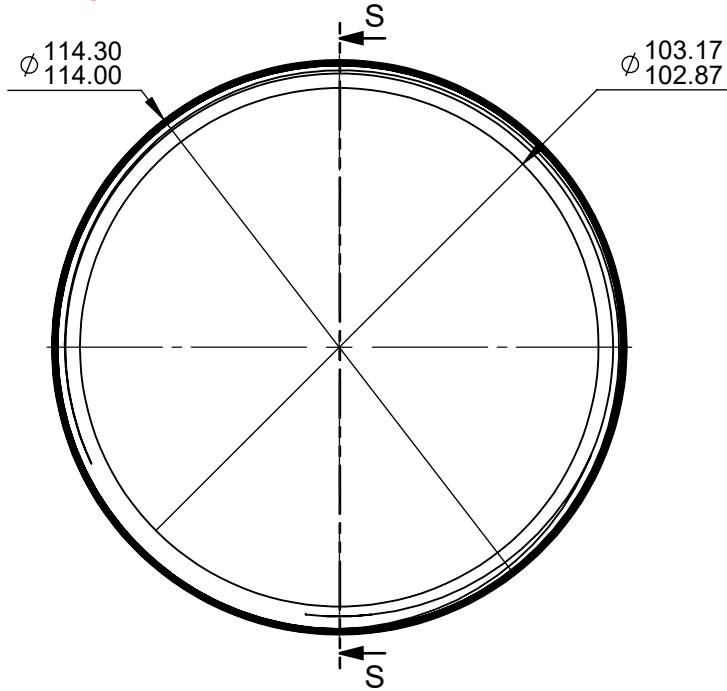


E:/ CAD OEC JAM / XXXX


Critical dimension	>120	>10	1000	400	120	30	6	3	0	Distance Tolerances According to "ISO 2768"	Permissible deviations in mm for ranges in nominal lengths
	400	50	2000	1000	400	120	30	6	3		
Important dimension	±0°10'	±1°	±0.50	±0.30	±0.20	±0.15	±0.10	±0.05	±0.20	Range	Fine
	±0°15'	±1°	±1.20	±0.80	±0.50	±0.30	±0.20	±0.10	±0.20	Medium	Medium
	±0°30'	±1°30'	±3.00	±2.00	±1.20	±0.80	±0.50	±0.30	±0.20	Coarse	Coarse

NOTES:

- STANDARD NPT TAPERED PIPE THREADS AS PER ANSI/ASME B1.20.1-1983 SPECIFICATION
- THREAD INSPECT WITH GAUGE
- REMOVE ALL SHARP EDGES/CORNERS
- MATERIAL: ALUMINUM 6061-T6 (COPPER-FREE ALUMINUM (LESS THAN 4/10 OF 1%))**
- FINISH : ANODIZE**



SECTION S-S

	NAME	SIGN	DATE						
DRAWN	SAMEER		14.01.25						
CHECKED	S.P.		14.01.25						
APPROVED	S.G.		14.01.25						
MATERIAL: ALUMINUM 6061-T6				Rev. No.	Details of Revision	Date	Drawn	Approved	
TREATMENT: Anodize				 ORIENTAL EXPORT CORPORATION					
THIRD ANGLE PROJECTION									
SCALE - N.T.S.				TITLE : 4" Aluminum, Rigid Conduit Nipple					
All dimensions are in mm.				Drawing No.:	Part No.:AN400	Weight:313.02gm	Size: A4		

NOTE:
REMOVE ALL SHARP EDGES/ CORNERS.
PART MUST BE FREE FROM CRACKS & DAMAGES
SURFACE FINISH: NEAT & CLEAN.